

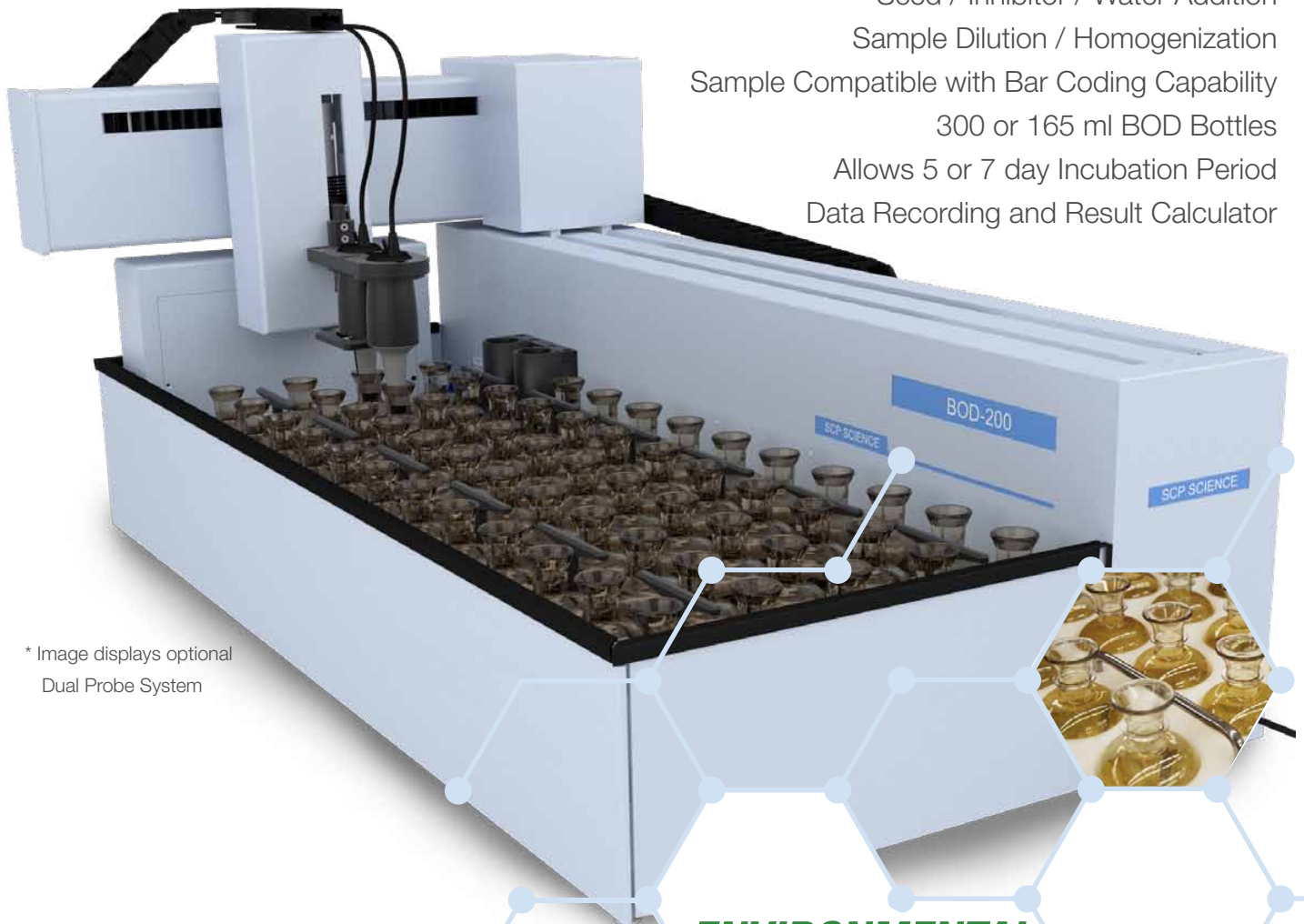
Automate your processes
Automate your lab
Innovate

with **EasyPREP**
BOD-200

Automated Analyzer

Full Process Automation Provides Unattended:

- BOD / cBOD / DO Analysis
- Seed / Inhibitor / Water Addition
- Sample Dilution / Homogenization
- Sample Compatible with Bar Coding Capability
- 300 or 165 ml BOD Bottles
- Allows 5 or 7 day Incubation Period
- Data Recording and Result Calculator



* Image displays optional
Dual Probe System

**ENVIRONMENTAL
TESTING**
made
Easy/PREP

Environmental awareness and monitoring are crucial in ensuring a healthy and balanced ecosystem. Environmental Law plays a vital role in regulating the use of natural resources and in protecting the environment. Numerous regulations have been put forth at national and international levels in order to reinforce practices that would maintain a healthy environment.

The **EasyPREP** portfolio provides environmental testing laboratories with the technologies required to comply with environmental water legislation through automated, unattended, environmental testing, analytical platforms.

The BOD-200 provides users with the capability to conduct BOD, cBOD and DO analysis. Analyze cBOD in conjunction with BOD to verify if non-compliant BOD results are due to nitrification and to obtain results more reflective of real effluent quality than under nitrifying conditions.

Overview

THE BOD-200 AUTOMATES BOD, cBOD AND DO ANALYSIS FOR ENVIRONMENTAL TESTING, STATE AND MUNICIPAL TESTING LABS

- Improve laboratory productivity by assigning personnel to value added tasks instead of repetitive manual BOD measurements.
- Ensure that your laboratory complies to accuracy and precision requirements.
- Ensure repeatability. Results are only reflective of sample variations.
- Quick reference and tracking of result records.

BIOCHEMICAL OXYGEN DEMAND (BOD), MEASURES OXYGEN DEPLETION WHICH REPRESENTS THE BREAKDOWN OF ORGANIC MATERIAL BY MICROORGANISMS

Carbonaceous BOD, cBOD, measures oxygen depletion from the breakdown of organic material by microorganisms in which the contribution from nitrogenous bacteria has been suppressed.

Features

- Universal platform accommodates 300 ml re-usable glass and/or disposable plastic bottles (max. sample load per cycle 58 bottles); and 165 ml glass bottles (max. sample load per cycle 70 bottles).
- Bar Coding option provides sample, bottle and rack tracking throughout the process.
- Optimize laboratory management by opting for a 5 or 7-day incubation period.
- Auto Wash Station prevents cross contamination.
- Automatic flagging of abnormal results.
- User defined bottle labeling.
- Method building, data acquisition and analysis, compliant with requirements.
- Automated software calculation of BOD, cBOD concentration.
- Software calculated volume of dilution water.
- Controlled liquid dispensing accuracy.
- Integrated blade stirrer for homogenization and optimal stabilization time.
- YSI Optical Probe.
- Rinsing station for residual sample removal, automatic rinsing between samples.
- Combined BOD and cBOD Analysis.

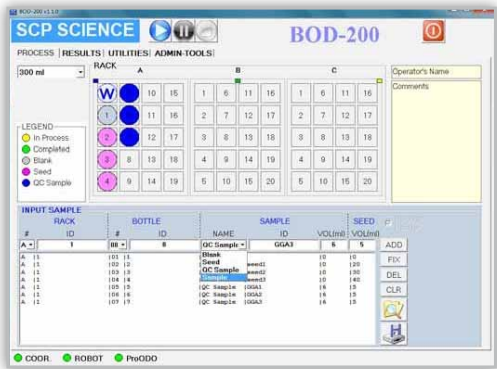
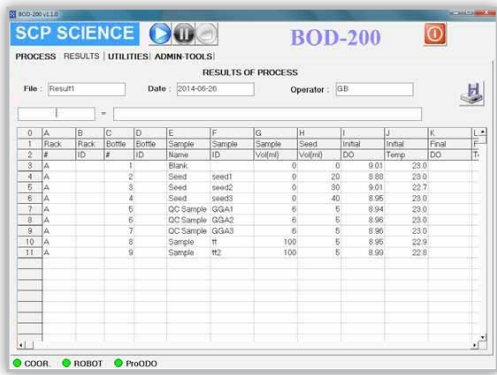


Length	45.87" (116.5 cm)
Depth	25.60" (65 cm)
Height	25.20" (64 cm)

COMPLIANT WITH
LABORATORY STANDARDS:

ISO 5815-1 | EN-1899-1 | EN-1899-2 | EN-5814 (2012) | EPA 405.1

Software Features



- Measure dissolved oxygen concentration
- BOD and cBOD calculations compliant with international ISO, EPA, JIS and EN regulations
- Complete traceability using bar coding capability for racks, bottles and samples
- Measure sample BOD and cBOD in the same run for best quality control of BOD results
- Reload pre-saved method lists for fast set-up of routine operations
- Set 5-day or 7-day incubation period
- Rack-specific time tracking of incubation periods
- Automatic data export in a LIMS and spreadsheet-compatible format
- Automatic flagging of “out-of-range” results applying pre-defined criteria for blanks, seed controls and standards
- Automatic oxygen depletion control
- Automatic temperature compensation
- User definable seed volume addition
- Easy and quick software managed probe calibration function
- Prevent growth inside the tubing by priming with a click of a button



Probe Options

	Optical Probe	Membrane Probe
Range:	0-50 mg/L	0-50 mg/L
Accuracy:	0 to 20: ±0.1 mg/L or ±1% reading, whichever greater	0 to 20: ±0.1 mg/L or ±2% reading, whichever greater
Resolution:	0.01 mg/L	0.01 mg/L
Response time:	T90=22 seconds with stirring	T90=30 seconds with stirring

BOD-200 Ordering Information

ORDER INSTRUMENT

Description	Catalog No.
BOD-200 with Optical Probe	010-420-001
BOD-200 with Membrane Probe	010-420-002

STEP 1 - SELECT RACKS (3 REQUIRED)

Description	Bottle Volume	Bottle capacity	Catalog No.
BOD bottle Rack, glass	165 ml	24	010-420-054
BOD bottle Rack, glass	300 ml	10	010-420-086
PP BOD Dual Probe Bottle Rack	300 ml	20	010-420-035
PP BOD Dual Probe Bottle Rack	300 ml	20	010-420-036
PP BOD Dual Probe Bottle Rack	60 ml	42	010-420-037

STEP 2 - SELECT BOTTLE OPTIONS

Description	Qty (pk)	Catalog No.
165 ml BOD glass bottles, BOD cap sold separately	24	010-420-056
165 ml BOD bottle caps	24	010-420-058
BOD disposable plastic bottles, numbered, 300 ml	100	010-420-010
BOD glass bottles, numbered w\Stopper, 300 ml	24	010-420-024
300 ml BOD glass bottles, barcoded (1-24) w\Stopper	24	010-420-066

INSTRUMENT OPTIONS

EasyPREP BOD-200 with Optical Probe

Description	Catalog No.
Dual Probe Kit	010-420-003
BOD Optical Probe	010-420-030
Probe Sensor Replacement Cap	010-420-090
Dispensing Replacement tubing	010-420-088
Barcode reader, for rapid loading of sample identification	010-600-034
PC w/operating system (applicable to N.-American orders only)	010-400-008

EasyPREP BOD-200 with Membrane Probe

Description	Catalog No.
Dual Probe Kit	010-420-004
BOD Membrane Probe	010-420-031
Probe Sensor Replacement Cap	010-420-091
Dispensing Replacement tubing	010-420-088
Barcode reader, for rapid loading of sample identification	010-600-034
PC w/operating system (applicable to N.-American orders only)	010-400-008

ACCESSORIES

Description	Catalog No.
Barcode Reader, for rapid loading of sample identification	010-600-034
BOD Bottle Cap for 300 ml, plastic or glass bottles, pk. 25	010-420-018
PC with Windows OS	010-400-008
Optical Probe Replacement Stirrer	010-420-034

COMPUTER REQUIREMENTS

PC Processor:	1GHz or superior
RAM memory:	1 GB RAM
Disk minimum space:	1 GB free
Ports:	1 USB port available
Operating System:	Windows 7 / 8

Description	Qty (pk)	Catalog No.
300 ml BOD glass bottles, barcoded (25-48) w\Stopper	24	010-420-068
300 ml BOD glass bottles, barcoded (49-72) w\Stopper	24	010-420-070
300 ml BOD glass bottles, barcoded (73-96) w\Stopper	24	010-420-072
300 ml BOD glass bottles, barcoded (97-120) w\Stopper	24	010-420-074
300 ml BOD glass bottles, barcoded (121-144) w\Stopper	24	010-420-076
300 ml BOD glass bottles, barcoded (145-168) w\Stopper	24	010-420-078
300 ml BOD glass bottles, barcoded (169-192) w\Stopper	24	010-420-080
300 ml BOD glass bottles, barcoded (193-216) w\Stopper	24	010-420-082
300 ml BOD glass bottles, barcoded (217-240) w\Stopper	24	010-420-084
300 ml BOD glass bottles, barcoded (241-264) w\Stopper	24	010-420-106
300 ml BOD glass bottles, barcoded (265-288) w\Stopper	24	010-420-108
300 ml BOD glass bottles, barcoded (289-312) w\Stopper	24	010-420-110
300 ml BOD glass bottles, barcoded (313-336) w\Stopper	24	010-420-112
300 ml BOD glass bottles, barcoded (337-360) w\Stopper	24	010-420-114
300 ml BOD glass bottles, barcoded (361-384) w\Stopper	24	010-420-116
300 ml BOD glass bottles, barcoded (385-408) w\Stopper	24	010-420-118
300 ml BOD glass bottles, barcoded (409-432) w\Stopper	24	010-420-120
60 ml BOD glass bottles, barcoded (1-36) w\Stopper	36	010-420-060
60 ml BOD glass bottles, barcoded (37-72) w\Stopper	36	010-420-062
60 ml BOD glass bottles, barcoded (73-108) w\Stopper	36	010-420-064

STANDARDS & REAGENTS

Description	Size & Qty.	Catalog No.
BOD reagent kit containing reagents required to prepare BOD dilution water.	500ml/ea	250-110-150
Buffer pH 7.2 (phosphate), for BOD	500ml/ea	250-110-100
Calcium Chloride, CaCl ₂ , 2.75% w/v	500ml/ea	250-110-200
Ferric Chloride, FeCl ₃ , 0.025% w/v	500ml/ea	250-110-300
Magnesium Sulfate, MgSO ₄ , 2.25%w/v	500ml/ea	250-110-400
BOD Glucose Powder for check solution	10g/ea	250-110-500
BOD Glutamic Acid for check solution	10g/ea	250-110-600

To learn more, please contact one of our Sales Representatives online, or at one of our regional offices below.

CORPORATE HEADQUARTERS	USA	FRANCE	GERMANY
Phone: +1 (800) 361-6820 Fax: +1 (800) 253-5549	Phone: +1 (800) 361-6820 Fax: +1 (800) 253-5549	Phone: +33 (0) 1 69 18 71 17 Fax: +33 (0) 1 60 92 05 67	Phone: +49 (0) 8342-89560-61 Fax: +49 (0) 8342-89560-69

CORPORATE: Phone: +1 (514) 457-0701 | Fax: +1 (514) 457-4499

www.scpscience.com | sales@scpscience.com