

MPR 010

Mobile Phase Recycler



- ❖ *Save up to 90% of mobile phase in isocratic HPLC mode*
- ❖ *Compatible with any HPLC detector*
- ❖ *ActiveZERO™*
- ❖ *Fail-safe design*
- ❖ *GLP compliant*
- ❖ *Easy installation*
- ❖ *Simple operation*
- ❖ *External PC control*
- ❖ *Pays for itself quickly*

Mobile phase recycler MPR 010 is designed for efficient recycling of mobile phase in isocratic HPLC mode. In most applications, the majority of the mobile phase is not contaminated by the eluting samples and is unwisely wasted. By using MPR 010, the pure mobile phase is returned back to the supplying bottle, greatly reducing solvent cost as well as the expenses related to hazardous waste disposal. The principle of MPR 010 operation is based on automatic switching of the flow between "waste" and "recycle" positions according to the actual value of signal, continuously monitored on the detector. The switching valve is positioned just past the detector, so that the flow can be directed from the "recycle" position into the "waste" immediately when the signal increases above a predefined threshold. The redirection from "waste" back to "recycle" mode can be delayed to account for the time needed to rinse the connection between the detector and the recycler.

The MPR 010 can be set to respond to both, positive, and negative signal changes. The operation can be controlled either directly from the front panel or through a user-friendly software (running under Windows 95/98/NT systems), supplied with the unit. The signal level to trigger the switch can be adjusted in the range between 0.1 and 99%. The redirection delay can be set from 0 to 99 sec.

Along with the basic functions (signal level, redirection delay, signal autozero), MPR 010 has some unique features. ActiveZERO™ will engage the detector autozero, and after a preset time, the MPR 010 internal autozero. Fail-safe design will switch the flow into the "waste" mode in case of a power outage. In addition, all functions are programmable from a PC. The MPR 010 operation is documented in compliance with Good Laboratory Practice (GLP).

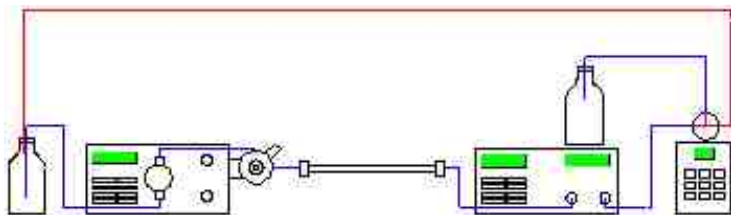


The chemist's source for laboratory products

www.laballiance.com

MPR 010

Mobile Phase Recycler



In comparison with other recyclers, MPR 010 offers more efficient performance, simple operation and many additional functions for a lower price. MPR 010 can be easily connected to any HPLC system.

Technical specifications

Signal input range	$\pm 1V$
Threshold level	0.1 - 99 %
Redirection delay	0 - 99 seconds (in 1 sec steps)
Autozero	100 % range
Switching valve	3-way zero dead volume valve with external control, 1/4" - 28 fittings
Working pressure	max. 30 psi (0.2 MPa)
Wetted material	PTFE
Display	3 digit LED
Valve position indicator	red - green LED
Inputs (TTL compatible)	signal, autozero, waste
Outputs (shortcut relay)	ActiveZERO™
PC communication	RS 232, control software included
Power input	120/230 V / 5 VA line adapter
Other requirements	4 - 35° C, humidity < 60 % rel., non-condensing max. 30 psi (0.2 MPa)
Dimensions	200 × 140 × 55 mm (H x W x D) (8" x 5.5" x 2")
Weight	600 g (13 lbs.)

Ordering Information

Part No.	Description
WI-DR99090601	MPR 010 Mobile Phase Recycler
WI-DR99112002	Connection cable (HP detectors)
WI-DR99112003	Autozero cable (HP detectors)



The chemist's source for laboratory products

www.laballiance.com